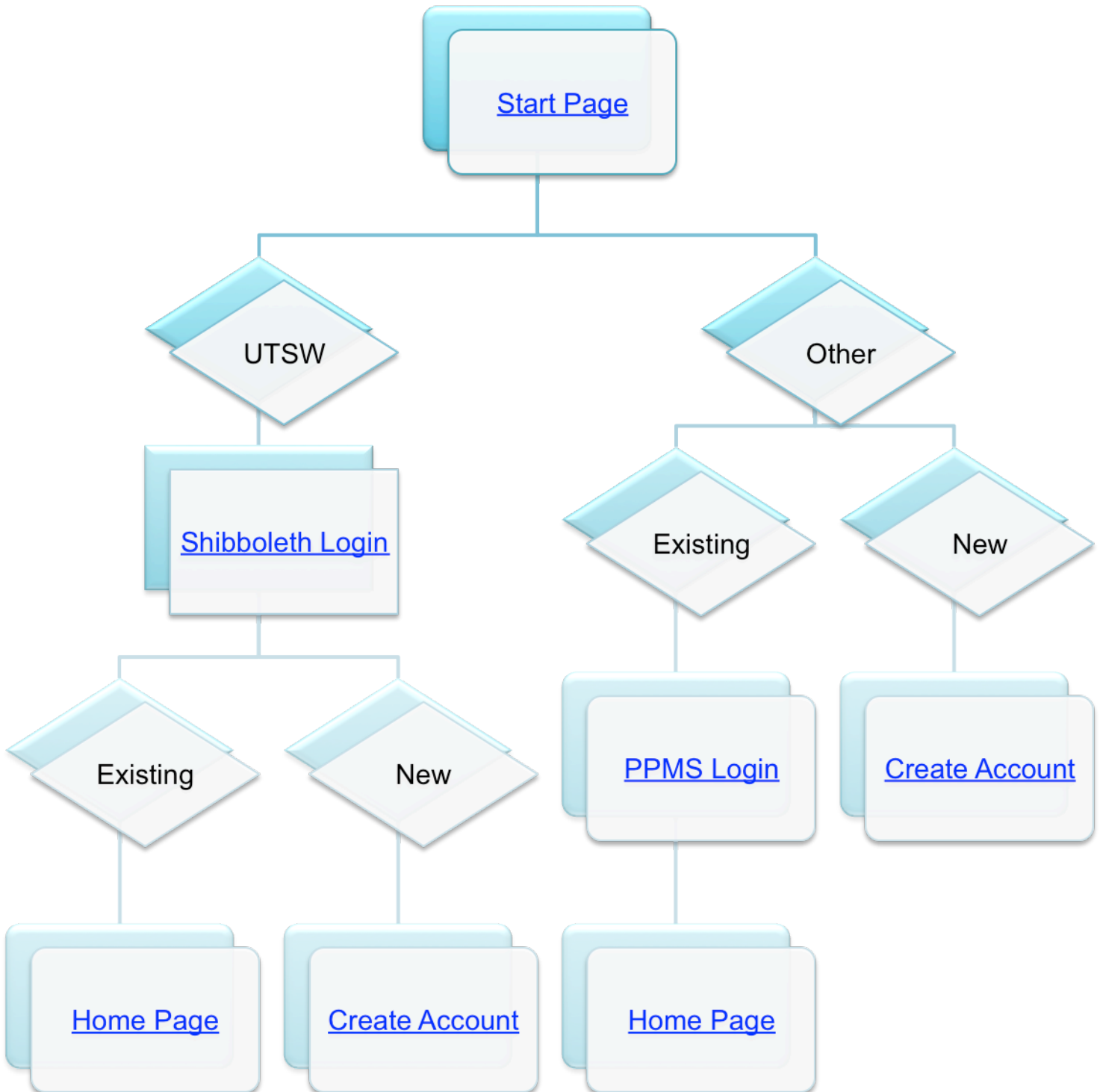


Quick Start Guide to PPMS for the UT Southwestern EM Core Facility

Click the links on the decision tree below for instructions:



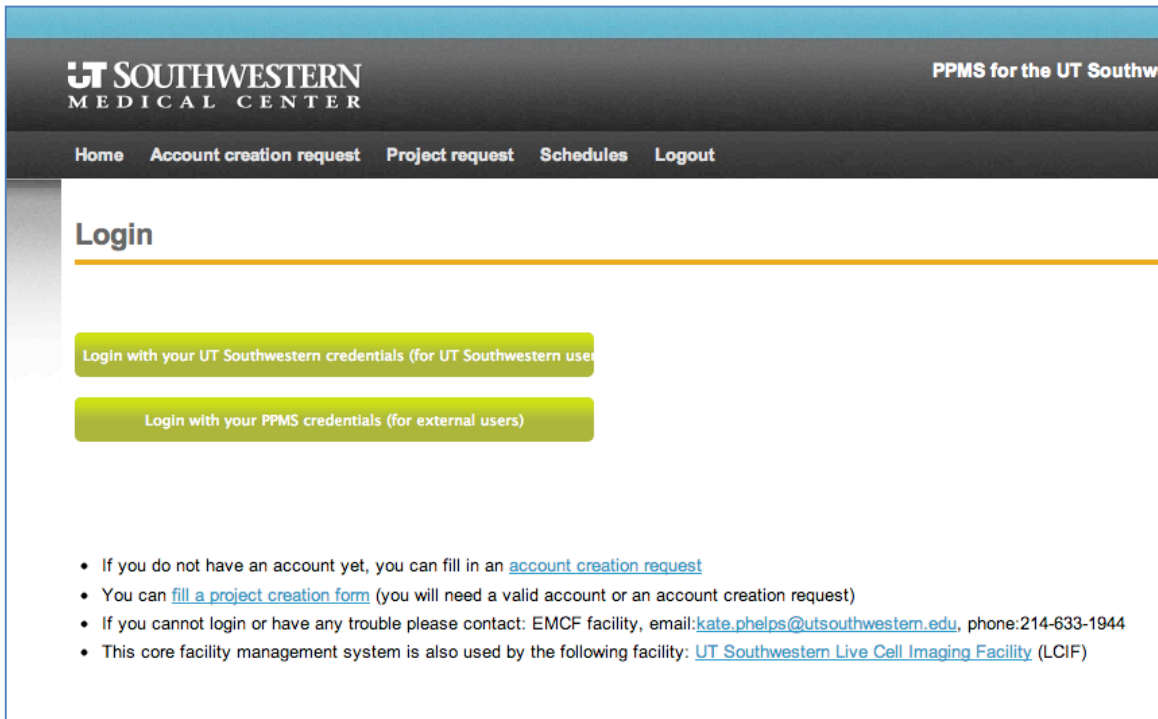
[Requesting EM services](#)

[Booking time on a system](#)

Quick Start Guide to PPMS for the UT Southwestern EM Core Facility

Click the link below to go to the start page

<https://ppms.us/utsw/login/?pf=3>



UT SOUTHWESTERN
MEDICAL CENTER

PPMS for the UT Southw

Home Account creation request Project request Schedules Logout

Login

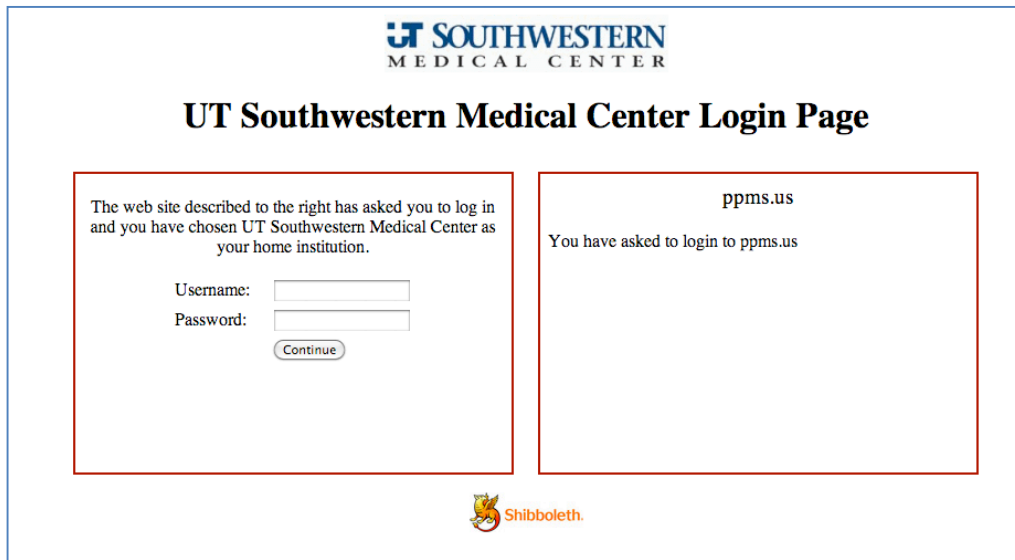
Login with your UT Southwestern credentials (for UT Southwestern users)

Login with your PPMS credentials (for external users)

- If you do not have an account yet, you can fill in an [account creation request](#)
- You can [fill a project creation form](#) (you will need a valid account or an account creation request)
- If you cannot login or have any trouble please contact: EMCF facility, email: kate.phelps@utsouthwestern.edu, phone: 214-633-1944
- This core facility management system is also used by the following facility: [UT Southwestern Live Cell Imaging Facility \(LCIF\)](#)

UTSW Users - Users with a UT Southwestern email address, click the top green button to go to the [Shibboleth logon page](#)

Other Users – Users without a UTSW user id and password should click the bottom green link on the start page to go to the [external login page](#)



- Logon with your UT Southwestern user id and password.
- If you already have an account in PPMS, you will be taken to your [home page](#).
- If you do not have an account, you will be taken to the account creation page:

Last name: *

First name: *

Full name:

Email: @ utsouthwestern.edu *

Login: You should not change a user's login if your PPMS system is synchronized with third party *

Phone:

Account number:

- Use the group's default account number (if it exists)
- Use an account number specific to that user

Password:

- Account uses Shibboleth

User's group: filter [Create a new group / Edit group](#)

Affiliation no affiliation (will uses the group's affiliation,)

Must change pwd:

Must change account number:

Active:

- Please fill in the required information.
- Group = Laboratory
- If your lab is not in the Group dropdown menu, click [My group is NOT in the list](#) and follow the instructions to create a new group

- Please use your PI's last name and the word Lab as the group name (e.g. Cobb Lab)
- Choose either UTSW or CCenter as the affiliation for your group. CCenter is for users whose PI is a member of the Simmons Cancer Center. If you don't know, choose UTSW.
- If your Department is not in the dropdown list, type it in.
- Choose UT Southwestern Medical School as your institution

Group

Select a group

[My group is NOT in the list](#)

Group name *

Group director or PI name: (Lastname, Firstname) *

Group director or PI email: *

Group administrative contact name:

Group administrative contact email:

Group administrative contact phone:

Group administrative contact fax:

Affiliation:

Select your affiliation below (optional)

Group Department: *

Institution Name: *

Invoicing address: *

- Click Submit to complete the account creation request. PPMS will email us and we will accept your account creation request. Then you can log on to the system using your UTSW user id and password.

Other Users

- If you already have an account, logon with your username and password to go to your [home page](#).

Login

Enter your username: To find your username:

Enter your password:

- If you do not remember your password, you can [follow these instructions](#)
- If you do not have an account yet, you can fill in an [account creation request](#)
- You can [fill a project creation form](#) (you will need a valid account or an account creation request)
- If you cannot login or have any trouble please contact: EMCF facility, email: kate.phelps@utsouthwestern.edu, phone: 214-633-1944
- This core facility management system is also used by the following facility: [UT Southwestern Live Cell Imaging Facility \(LCIF\)](#)

- If you do not have an account, click the [account creation request](#) link (arrow in screen shot above) to go to the account creation form

PPMS account creation form

PPMS accounts on this system are used by the following facilities: [UT Southwestern Live](#)

Important:
If you already have a PPMS account that does not work anymore or may have been deactivated, email: kate.phelps@utsouthwestern.edu, phone: 214-633-1944.
If you do not remember your password, you can [follow these instructions](#).

Please choose one of the following options:

Your institution is "UT Southwestern Medical School" (or its affiliates)
 Your institution is NOT "UT Southwestern Medical School" (or its affiliates)

Please enter your details below (* : required fields)

First name: *

Last name: *

Phone: *

Email: *

If your email exists in both a short and a long form, please use the short form
(Use jsmith@utsouthwestern.edu instead of john.smith@utsouthwestern.edu)

Password you want to use: *


Retype password: *

* Do not use a dictionary based word, or a name
* Do not use series like 1234 or qwerty or abcd
* Try to use combinations of lowercase (a-z), uppercase letters (A-Z), numbers (0-9) and non-alphanumeric characters
* The non alphanumeric characters allowed are:
! " # \$ % & ' () * + , - . / : ; < = > ? @ [\] ^ _ ` { | } ~ - and the space character

Group: *

My group is NOT in the list

- Select [Your institution is NOT "UT Southwestern Medical School" \(or its affiliates\)](#)
- Fill out the required information (Group = Laboratory)
- If your lab is not in the Group dropdown menu, click [My group is NOT in the list](#) and follow the instructions to create a group

Group
 Select a group 
[My group is NOT in the list](#)

Group name
 *

Group director or PI name: (Lastname, Firstname)
 *


Group director or PI email:
 *


Group administrative contact name:


Group administrative contact email:


Group administrative contact phone:

Group administrative contact fax:

Affiliation:
 Select your affiliation below (optional) 

Group Department:
 * 

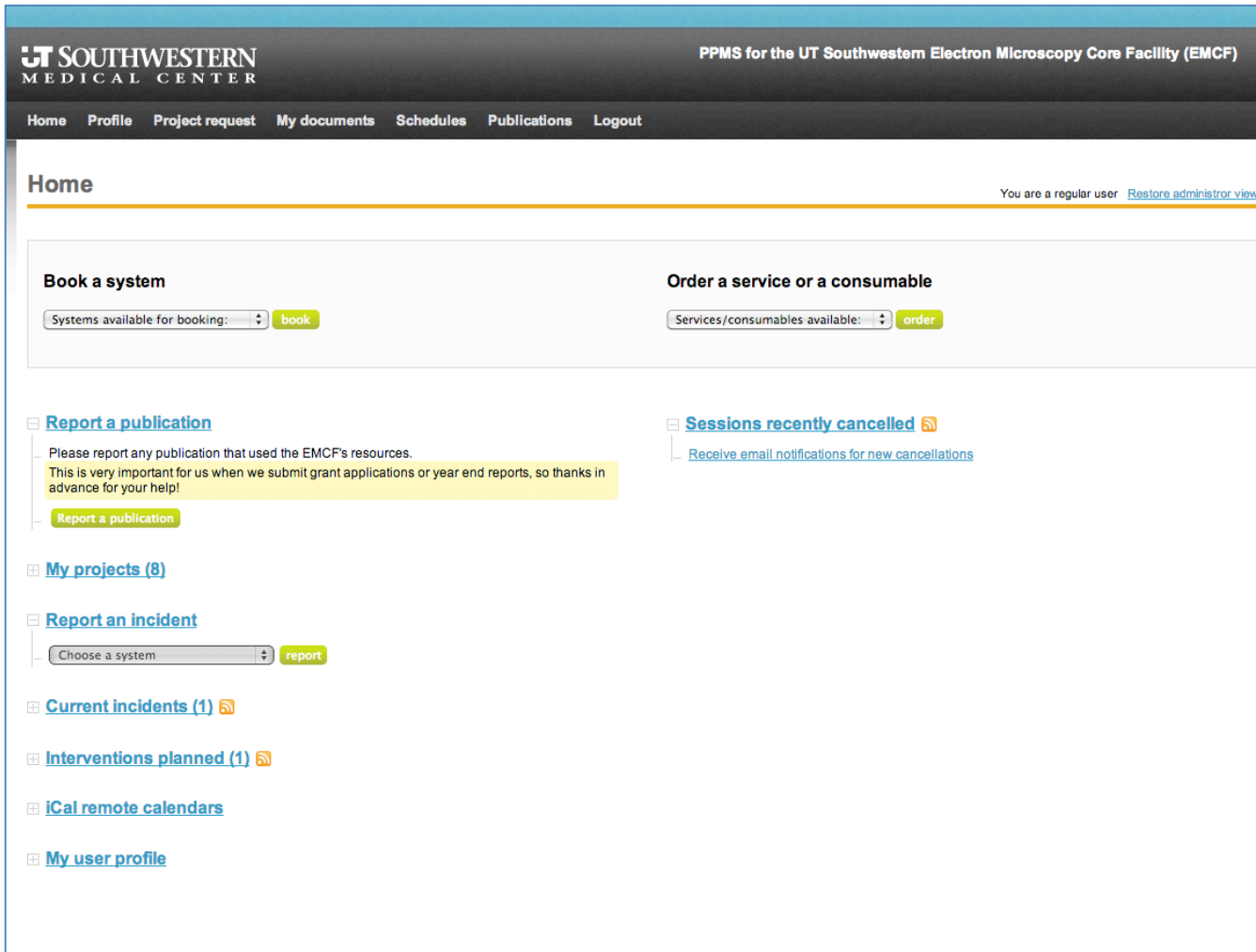
Institution Name:
 * 

Invoicing address:
  *

Submit form

- Please use your PI's last name and the word Lab as the Group name (e.g. Cobb Lab)
- If your Department or Institution is not in the dropdown list, type it in.
- Click Submit form to complete the account creation request. PPMS will email us and we will accept your account creation request. Then you can log on to the system using your username and password.

Once you are logged on you will be taken to your home page:



To Book Time on a System

- 1) On your Home Page, select a system from the Book a System pulldown menu
- 2) You will be taken to the sign up page for the current week for that system (e.g. Tecnai Spirit).
- 3) Click and drag to select a time slot
- 4) At the bottom, click Book the Selected Sessions to book your time.

To Request Sample Preparation, Training or other EMCF Staff Services

- 1) On your Home Page, click the Project Request tab and fill out an EMCF Project Request Form.
- 2) At the bottom, click Submit Request to send us the request. We will respond by email and proceed from there.